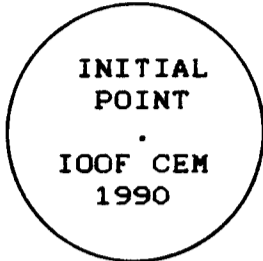


TILLAMOOK COUNTY SURVEYORS OFFICE

Initial Point
Bay City I.O.O.F. Cemetery
In Section 1 T.1S., R.10W., W.M.



I found a 2" iron pipe with a wooden plug and brass nail approximately 6" below the surface of the ground. I set a 5/8" iron rod with a 3" brass cap inside and encased in a 10" concrete cylinder flush with the surface.

History of Found Monument

The found monument is the original monument set for this initial point, see Tillamook County Surveyors map #C-323.

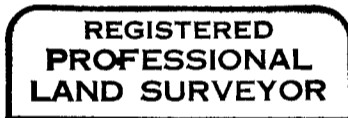
Location of Monument

This corner is located at the SW corner of the newer part of the cemetery.

In the presence of Dan McNutt & Al Dvorak

June 1990

Title:



Allan E. Duncan, C.S.

